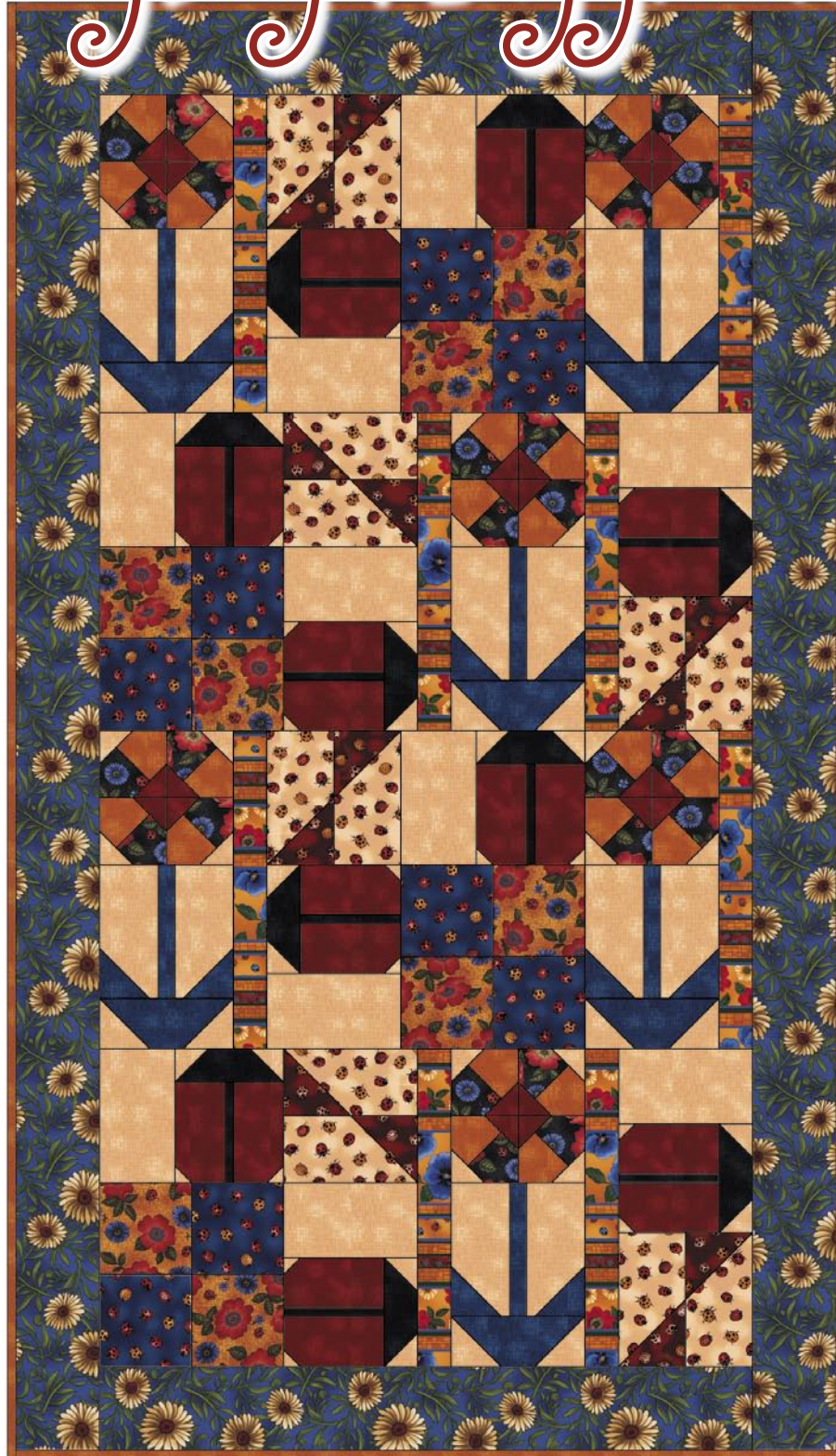




# Ladybug Playground



*Featuring Ladybug  
Collection*

**50" x 87"**

*Designed by Heather Hughes  
for Seattle Bay Fabrics*

**SEATTLE  
BAY** 

1637 Kahai Street  
Honolulu, HI 96819  
(800) 531-7913  
[www.konabay.com](http://www.konabay.com)



LADYBUG PLAYGROUND 50" x 87"	FIRST CUT		SECOND CUT	
	Number of Strips or Pieces	Dimensions	Number of Pieces	Dimensions
<b>Fabric A</b> Flower Petal LADY-05 Gold ½ yard	3	4½" x 42"	24	4½" squares
<b>Fabric B</b> Flower Petal LADY-01 Black ½ yard	3	4½" x 42"	24	4½" squares
<b>Fabric C</b> Background LADY-05 Cream 1⅓ yards	3 3 2 3 1	5" x 42" 4" x 42" 3½" x 42" 2½" x 42" 1½" x 42"	10 12 12 44 20	5" x 8½" 4" x 8½" 3½" squares 2½" squares 1½" squares
<b>Fabric D</b> Flower Center & Ladybug Body LADY-05 Red ⅝ yard	2 2	6½" x 42" 2½" x 42"	20 24	6½" x 3½" 2½" squares
<b>Fabric E</b> Flower Stem LADY-05 Blue ½ yard	3 2	3½" x 42" 1½" x 42"	6 12 6	3½" x 8½" 3½" squares 1½" x 8½"
<b>Fabric F</b> Stripe Accent LADY-03 Yellow ⅓ yard	4	2½" x 42"	8	2½" x 19½"
<b>Fabric G</b> Bowtie Accent LADY-04 Red ⅓ yard	2	4½" x 42"	12	4½" squares
<b>Fabric H</b> Bowtie LADY-04 Cream ½ yard	3	4½" x 42"	12	4½" x 8½"
<b>Fabric I</b> Ladybug Head LADY-05 Black ¼ yard	2 2	2½" x 42" 1" x 42"	10 10	2½" x 7" 1" x 6½"
<b>Fabric J</b> Block A LADY-01 Gold ½ yard	2	6" x 42"	8	6" squares
<b>Fabric K</b> Block B LADY-04 Blue ½ yard	2	6" x 42"	8	6" squares
<b>BORDERS, BINDING &amp; BACKING</b>				
<b>Outside Border</b> LADY-02 Blue 1½ yards	7	5½" x 42"		
<b>Binding</b> - ⅝ yard, based on 2¾" strips <b>Backing</b> - 5 yards <b>Batting</b> - 58" x 95"				

## Getting Started

This quilt features the Ladybug Collection presented by Seattle Bay Fabrics. Before you begin, read all instructions. Sew an accurate ¼"-wide seam allowance and use an assembly line method to construct this quilt. Press seams in direction of arrows as indicated in each diagram.

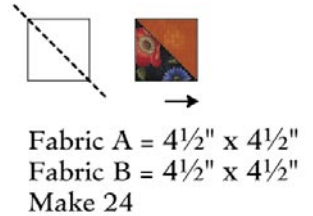
## Assembly Line Method

Use this method when making multiple pieces or blocks.

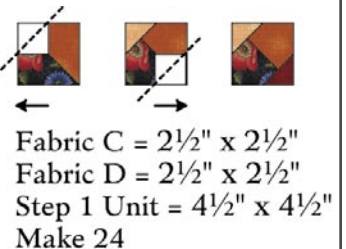
1. Position pieces right sides together, stitch unit.
2. Align and sew the next unit without breaking threads, continue this process to stitch additional units. Cut sections apart, press and continue with next step.

## Flower Block

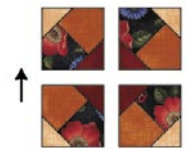
1. Simple Triangle technique is used throughout this project. Draw a diagonal line on the wrong side of one 4½" Fabric A square. This will be your sewing line. Place marked square on one 4½" Fabric B square as shown. Stitch on drawn line, trim ¼" away from stitch lines and press. Make twenty-four.



2. Making simple triangle units, sew one 2½" Fabric C square and one 2½" Fabric D square to unit from step 1 as shown. Press. Make twenty-four.

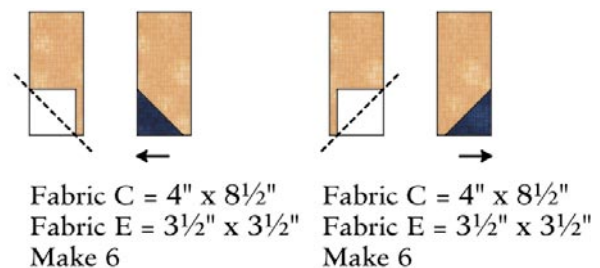


3. Sew four units from step 2 together as shown. Press. Make six.

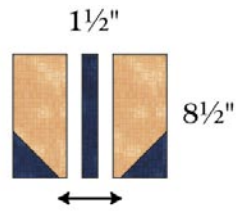


4. Making a simple triangle unit, sew one 3½" Fabric E square to one 4" x 8½" Fabric C piece as shown.

Press. Make six of each variation as shown.

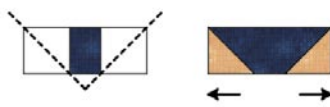


5. Sew  $1\frac{1}{2}$ " x  $8\frac{1}{2}$ " Fabric E strip between two units from step 4 as shown, checking orientation of units prior to sewing. Press. Make six.



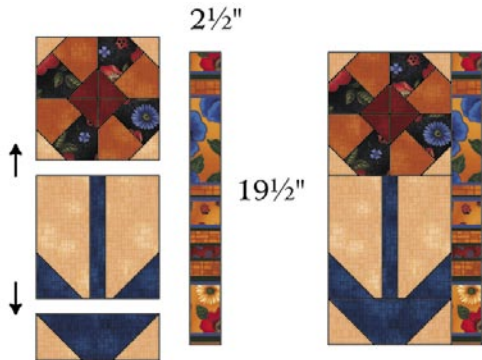
Make 6

6. Making simple triangle units, sew two  $3\frac{1}{2}$ " Fabric C squares to one  $3\frac{1}{2}$ " x  $8\frac{1}{2}$ " Fabric E piece as shown. Press. Make six.



Fabric C =  $3\frac{1}{2}$ " x  $3\frac{1}{2}$ "  
Fabric E =  $3\frac{1}{2}$ " x  $8\frac{1}{2}$ "  
Make 6

7. Sew one unit from step 3, one unit from step 5, and one unit from step 6 together as shown. Press. Sew  $2\frac{1}{2}$ " x  $19\frac{1}{2}$ " Fabric F strip to this unit as shown. Make six. This completes the Flower Block. Block measures  $10\frac{1}{2}$ " x  $19\frac{1}{2}$ ".

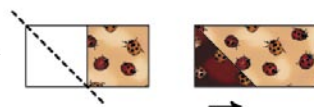


Make 6

Flower Block measures  $10\frac{1}{2}$ " x  $19\frac{1}{2}$ "

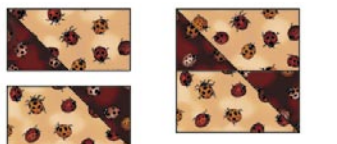
### Bowtie Block

1. Making a simple triangle unit, sew one  $4\frac{1}{2}$ " Fabric G square to one  $4\frac{1}{2}$ " x  $8\frac{1}{2}$ " Fabric H piece as shown. Press. Make twelve.



Fabric G =  $4\frac{1}{2}$ " x  $4\frac{1}{2}$ "  
Fabric H =  $4\frac{1}{2}$ " x  $8\frac{1}{2}$ "  
Make 12

2. Sew two units from step 1 together as shown. Press. Make six. Block measures  $8\frac{1}{2}$ " square.



Make 6

Bowtie Block measures  $8\frac{1}{2}$ " square

### Ladybug Blocks

1. Making simple triangle units, sew two  $2\frac{1}{2}$ " Fabric C squares to one  $2\frac{1}{2}$ " x 7" Fabric I piece as shown. Press. Make ten.



Fabric C =  $2\frac{1}{2}$ " x  $2\frac{1}{2}$ "  
Fabric I =  $2\frac{1}{2}$ " x 7"  
Make 10

2. Making a simple triangle unit, sew  $1\frac{1}{2}$ " Fabric C square to  $6\frac{1}{2}$ " x  $3\frac{1}{2}$ " Fabric D piece as shown. Press. Make ten of each variation. Sew 1" x  $6\frac{1}{2}$ " Fabric I strip between two variations as shown,

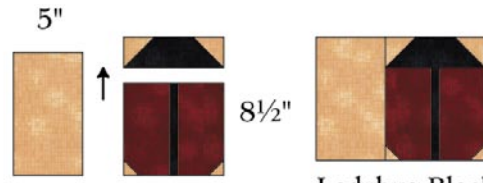
checking orientation of units prior to sewing. Press. Make ten.



Fabric C =  $1\frac{1}{2}$ " x  $1\frac{1}{2}$ "  
Fabric D =  $6\frac{1}{2}$ " x  $3\frac{1}{2}$ "  
Make 10 of each

Make 10

3. Sew unit from step 1 to unit from step 2 as shown. Press. Make ten. Sew 5" x  $8\frac{1}{2}$ " Fabric C strip to this unit as shown. Press. Make ten. Block measures  $11\frac{1}{2}$ " x  $8\frac{1}{2}$ ".



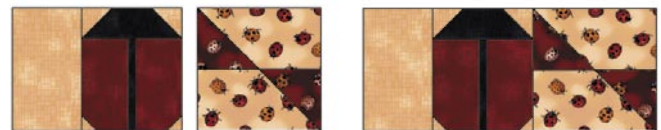
Make 10

Ladybug Block measures  $11\frac{1}{2}$ " x  $8\frac{1}{2}$ "



### Ladybug/Bowtie Unit

Sew one Ladybug Block to one Bowtie Block as shown, checking orientation of units prior to sewing. Press. Make six. Unit measures  $19\frac{1}{2}$ " x  $8\frac{1}{2}$ ".

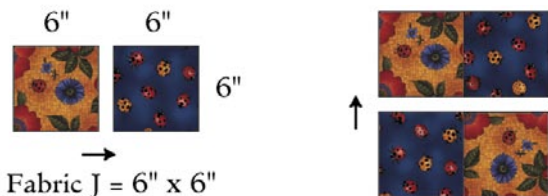


Make 6

Ladybug/Bowtie Unit measures  $19\frac{1}{2}$ " x  $8\frac{1}{2}$ "

### Ladybug/Square Unit

1. Sew one 6" Fabric J square to one 6" Fabric K square as shown. Press. Make eight. Sew two units together as shown. Press. Make four Square Blocks.



Fabric J = 6" x 6"  
Fabric K = 6" x 6"  
Make 8

Make 4

2. Sew one Ladybug Block to one Square Block as shown checking orientation of units prior to sewing. Press. Make four. Unit measures  $11\frac{1}{2}$ " x  $19\frac{1}{2}$ ".

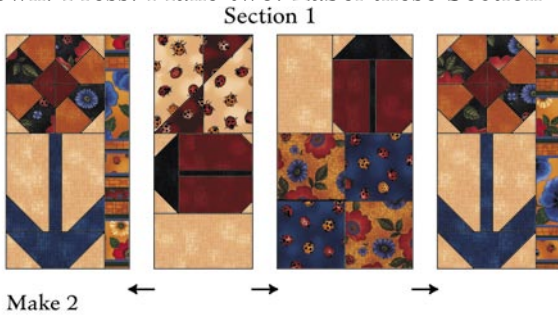


Make 4

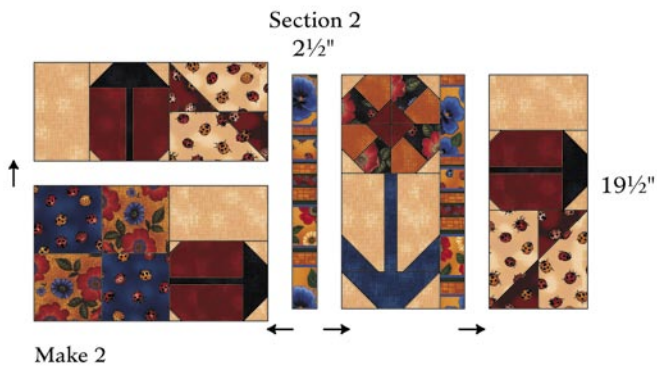
Ladybug /Block Unit measures  $11\frac{1}{2}$ " x  $19\frac{1}{2}$ "

## Assembly

1. Checking orientation of all units prior to sewing, sew one Flower Block, one Ladybug/Bowtie unit, one Ladybug/Square unit and one Flower Block together as shown. Press. Make two. Label these Section One.



2. Checking orientation of all units prior to sewing, sew one Ladybug/Bowtie unit to one Ladybug/Square unit as shown. Press. Sew one 2½" x 19½" Fabric F strip, one Flower Block and one Ladybug/Bowtie unit as shown. Press. Join sections as shown. Make two. Label these Section Two.



3. Referring to quilt layout, arrange and sew together four rows, checking orientation of sections prior to sewing. Press.

4. Measure quilt from side to side. Cut two 5½"-wide Outside Border strips to this measurement. Sew to top and bottom of quilt. Press seams toward border.

5. Sew 5½" Outside Border strips end-to-end to make one continuous 5½"-wide Outside Border strip. Press. Measure quilt through center from top to bottom, including borders just added. Cut two strips to that measurement. Sew to top and sides of quilt and press.

## Finishing the Quilt

1. Cut backing into three equal pieces. Sew pieces together to make one 58" x 120" approximate backing piece. Trim to 58" x 95". Press.

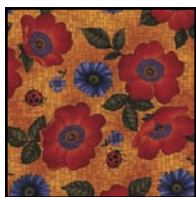
2. Press backing and quilt top trimming all excess threads. Layer and baste backing, batting and quilt top together. Hand or machine quilt and bind as desired.



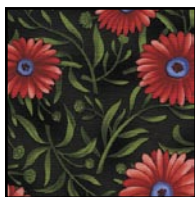
*Ladybug Collection by Seattle Bay Fabrics includes seventeen distinctive cotton patterns in several colorways.*



LADY-01  
Black 15



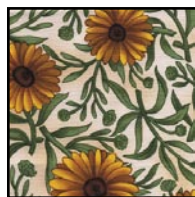
LADY-01  
Gold 15



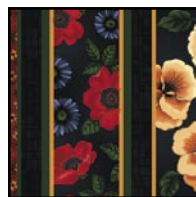
LADY-02  
Black 15



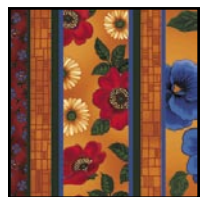
LADY-02  
Blue 15



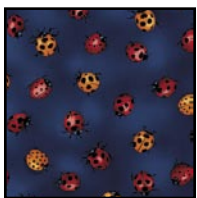
LADY-02  
Cream 15



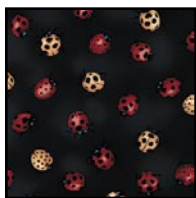
LADY-03  
Black 15



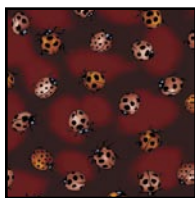
LADY-03  
Yellow 15



LADY-04  
Blue 15



LADY-04  
Gray 15



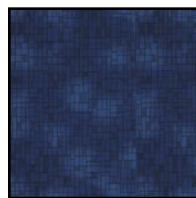
LADY-04  
Red 15



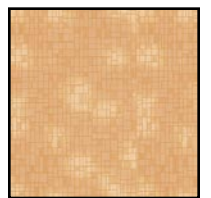
LADY-04  
Cream 15



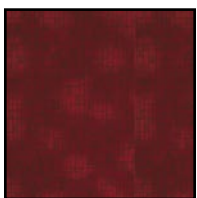
LADY-05  
Black 15



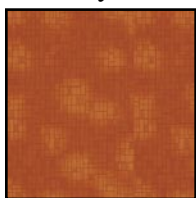
LADY-05  
Blue 15



LADY-05  
Cream 15



LADY-05  
Red 15



LADY-05  
Gold 15

**SEATTLE  
BAY**

1637 Kahai Street  
Honolulu, HI 96819  
(800) 531-7913  
[www.konabay.com](http://www.konabay.com)