

# Mary Ellen Hopkins

72" X 72"  
by Janet Houts



**SEATTLE  
BAY**

A Division of Kona Bay Fabrics

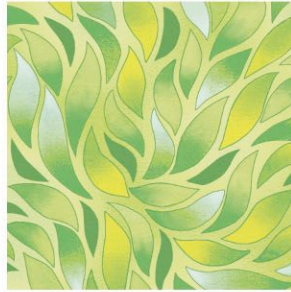
1637 Kahai Street  
Honolulu, Hawaii 96819  
(800) 531-7913

Free pattern available at [www.konabay.com](http://www.konabay.com)

Mary Ellen Hopkins by Seattle Bay



MARY-01 / lavender



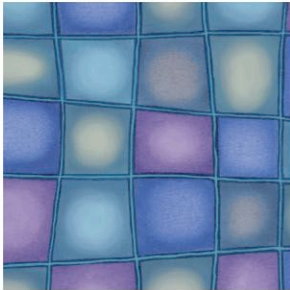
MARY-01 / lime



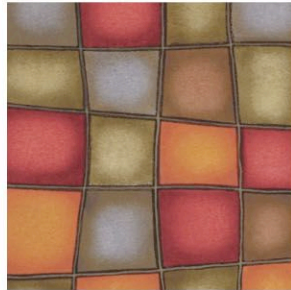
MARY-01 / poppy



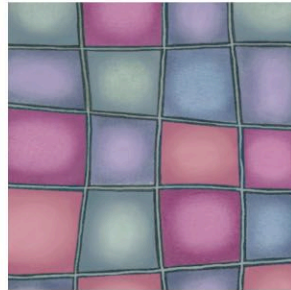
MARY-01 / pumpkin



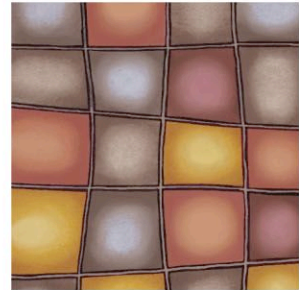
MARY-03 / lavender



MARY-03 / orange



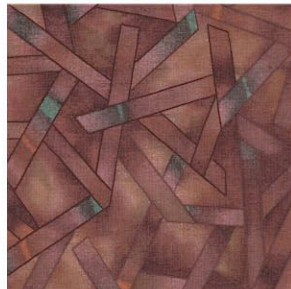
MARY-03 / orchid



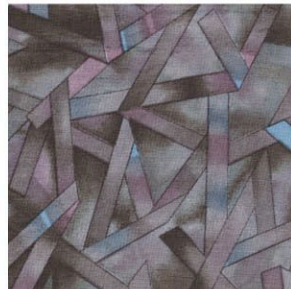
MARY-03 / rust



MARY-04 / blueberry



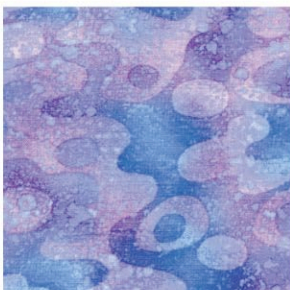
MARY-04 / brick



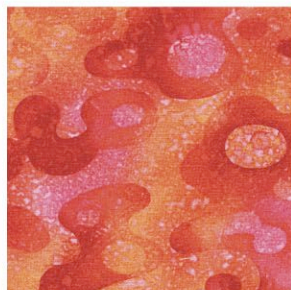
MARY-04 / charcoal



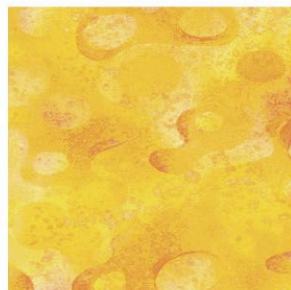
MARY-04 / indigo



MARY-05 / amethyst



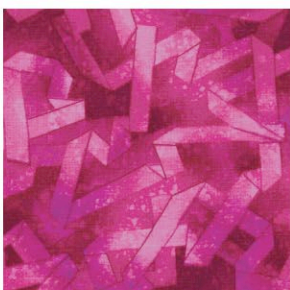
MARY-05 / coral



MARY-05 / sunbeam



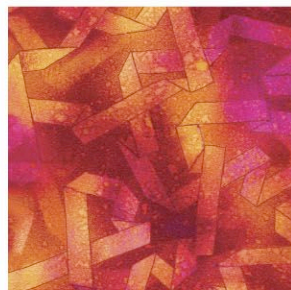
MARY-06 / moss



MARY-06 / raspberry



MARY-06 / royal



MARY-06 / rust



ARRA-01 / sand

\*Use in place of MARY-02 / beige

## Mary Ellen Hopkins

Quilt designed by Janet Houts for Kona Bay Fabrics

Quilt size: 72 x 72 inches

Block size: 8 inches Sashing size: 4 inches

### Getting Started

All seam allowances are 1/4". Please read all directions before beginning and press carefully after each step.

### Fabric Requirements

Fabric A:	1-1/3 yds.	Mary 02-Beige (*Use ARRA 01-sand in place of Mary 02-Beige)
Fabric B:	1-1/2 yds.	Mary 06-Rust
Fabric C:	1-1/2 yds.	Mary 04-Brick
Fabric D:	1-3/4 yds.	Mary 01-Pumpkin
Fabric E:	1/3 yd.	Mary 01-Poppy
Fabric F:	2/3 yd.	Mary 05-Sunbeam
Fabric G:	1-1/4 yds.	Mary 03-Orange

Backing:

Fabric D: 6-2/3 yds. Mary 01-Pumpkin Cut and piece to fit quilt top, with 4" overlap on all four sides

Binding:

Fabric H: 5/8 yd. Mary 05-Coral Cut (8) 2-1/4" strips length of fabric, pieced together

### Cutting Directions

Fabric A: Cut (26) 2" squares

Cut (13) 2-7/8" squares, cut in half on diagonal once to make 26 half-square triangles

Cut (36) 4-1/2" squares

Cut (13) 4-7/8" squares, cut in half on diagonal once to make 26 half-square triangles

Cut (7) 5-1/4" squares, cut in half on diagonal twice to make 26 quarter-square triangles

Fabric B: Cut (13) 2" squares

Cut (7) 2-7/8" squares, cut in half on diagonal once to make 13 half-square triangles

Cut (60) 4-1/2" squares

Cut (7) 4-7/8" squares, cut in half on diagonal once to make 13 half-square triangles

Cut (4) 5-1/4" squares, cut in half on diagonal twice to make 13 quarter-square triangles

Fabric C: Cut (13) 2" squares

Cut (7) 2-7/8" squares, cut in half on diagonal once to make 13 half-square triangles

Cut (60) 4-1/2" squares

Cut (7) 4-7/8" squares, cut in half on diagonal once to make 13 half-square triangles

Cut (4) 5-1/4" squares, cut in half on diagonal twice to make 13 quarter-square triangles

Fabric D: Cut (7) 8-1/2" strips of fabric width of fabric, sub-cut into:

(60) 4-1/2" x 8-1/2" strips

Fabric E: Cut (12) 4-1/2" squares

Fabric F: Cut (8) 2-1/2" strips width of fabric, sub-cut into:

(24) 2-1/2" x 4-1/2" strips

(24) 2-1/2" x 8-1/2" strips

Fabric G: Cut (8) 4-1/2" strips width of fabric, cut and piece into:

(2) 4-1/2" x 64-1/2" strips

(2) 4-1/2" x 72-1/2" strips

## Block A Assembly

1. Sew one 2" Fabric C square to one 2" Fabric A square. Sew one 2" Fabric B square to one 2" Fabric A square.
2. Refer to fig. 1 for fabric placement. Sew one small Fabric C half-square triangle to upper left corner, one small Fabric B half-square triangle to lower right corner. Sew one each small Fabric A half-square triangles to remaining sides.
3. Sew one each Fabric A quarter-square triangle to left and right sides of sewn square. Sew one Fabric C quarter-square triangle to top of sewn square, and one Fabric B quarter-square triangle to bottom of sewn square.
4. Sew one each large Fabric A half-square triangle to upper left and lower right sides of sewn square. Sew one large Fabric B half-square triangle to lower left and one large Fabric C half-square triangle to upper right side of sewn square to complete the block. Make 13 blocks.

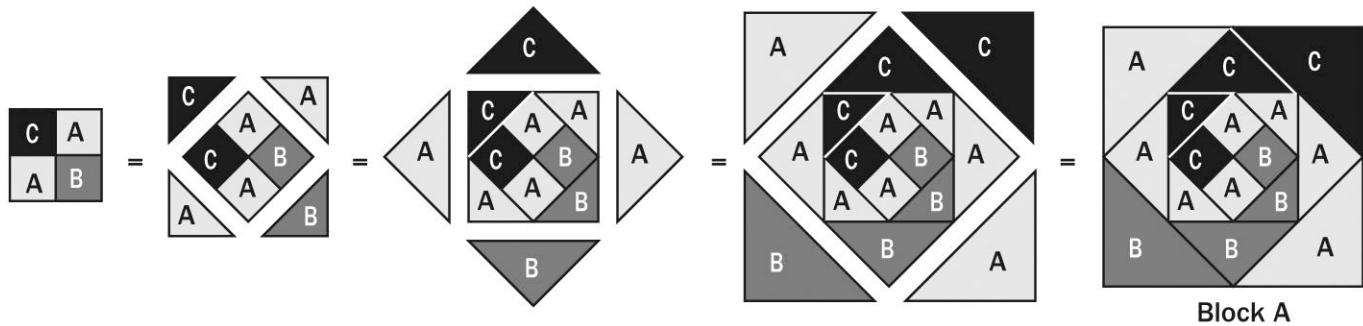


Figure 1 - Block A

## Block B Assembly

5. Sew one each 2-1/2" x 4-1/2" Fabric F strip to left and right sides of one 4-1/2" Fabric E square.
  6. Sew one each 2-1/2" x 8-1/2" Fabric F strip to top and bottom of sewn block.
- Make 12 blocks.

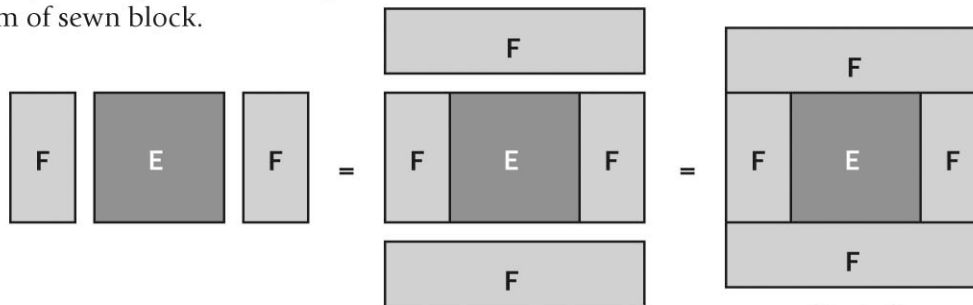


Figure 2 - Block B

## Sashing Assembly

**Note:** Sashings are made up of alternating 4-1/2 Fabric A squares with flying geese units. Refer to fig. 5 for placement.

7. Sew one 4-1/2" Fabric B square to the left side of a 4-1/2" x 8-1/2" Fabric D strip, right sides together. Sew across the square diagonally and flip open the triangle formed and press. Trim away excess fabric 1/4" from the sewn seam. Repeat for the right side. Make 30 flying geese units.



Figure 3 - Flying Geese Unit B

8. Using same method as step 7 above, using 4-1/2" Fabric C squares and Fabric D strips. Make 30 flying geese units.

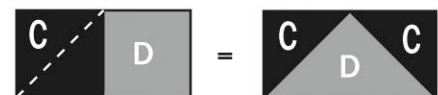


Figure 4 - Flying Geese Unit C

## Row Assembly

9. Alternate flying geese sashing units B and C with 4-1/2" Fabric A squares as seen in rows 1 and 3 in fig. 5, making three of each row.

10. Alternate flying geese sashing units B and C with 8-1/2" Block A and Block B squares as seen in rows 2 and 4 in fig. 5, making three of row 2 and two of row 4.

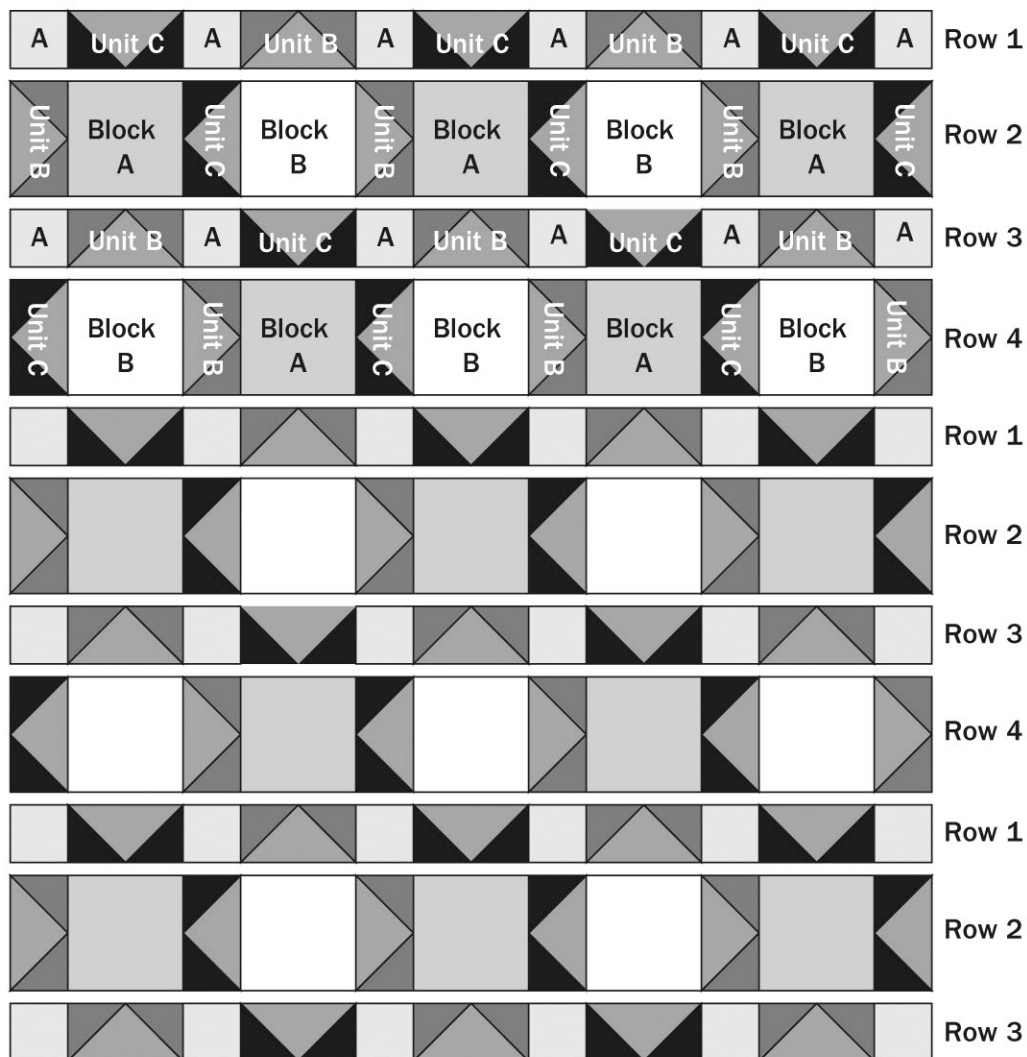


Figure 5

## Quilt Top Assembly

11. Attach border by sewing two 4-1/2" x 64-1/2" Fabric G strips to left and right sides of quilt top. Sew two 4-1/2" x 72-1/2" strips of Fabric G strips to top and bottom of quilt top.

12. Layer, quilt and bind as desired.

**SEATTLE  
BAY**  
A Division of Kona Bay Fabrics

1637 Kahai Street  
Honolulu, HI 96819  
(800) 531-7913  
www.konabay.com

©2007 Kona Bay Fabrics

Permission given to copy pattern for personal use only. No rights given for resale.