

# yoshiko's garden

Featuring Yoshiko Collection



68" x 77"




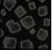

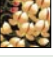
Designed by Heather Hughes  
for Kona Bay Fabrics

  
**KONA BAY**  
F A B R I C S



1637 Kahai Street  
Honolulu, HI 96819  
(800) 531-7913  
[www.konabay.com](http://www.konabay.com)

## Getting Started

This quilt features Yoshiko Collection presented by Kona Bay Fabrics. Before you begin, read all instructions. Sew an accurate  $\frac{1}{4}$ "-wide seam allowance and use an assembly line method to construct this quilt. Press seams in direction of arrows as indicated in each diagram.

YOSHIKO'S GARDEN 68" x 77"	FIRST CUT		SECOND CUT	
	Number of Strips or Pieces	Dimensions	Number of Pieces	Dimensions
 <b>Fabric A</b> Flower A YOSH-02 Gray $\frac{5}{8}$ yard	2	$9\frac{1}{2}" \times 42"$	5	$9\frac{1}{2}"$ squares
 <b>Fabric B</b> Flower B YOSH-02 Red $\frac{1}{3}$ yard	1	$9\frac{1}{2}" \times 42"$	4	$9\frac{1}{2}"$ squares
 <b>Fabric C</b> Flower C YOSH-02 Green $\frac{5}{8}$ yard	2	$9\frac{1}{2}" \times 42"$	6	$9\frac{1}{2}"$ squares
 <b>Fabric D</b> Black Accent YOSH-05 Black 1 $\frac{1}{4}$ yards	12	$3\frac{1}{2}" \times 42"$	126	$3\frac{1}{2}"$ squares
 <b>Fabric E</b> Gold Accent YOSH-05 Yellow 1 $\frac{1}{8}$ yards	11	$3\frac{1}{2}" \times 42"$	30 24	$3\frac{1}{2}" \times 9\frac{1}{2}"$ $3\frac{1}{2}"$ squares
 <b>Fabric F</b> Accent Block YOSH-04 Red $\frac{1}{4}$ yard	2	$3\frac{1}{2}" \times 42"$	15	$3\frac{1}{2}"$ squares

## BORDERS, BINDING & BACKING

 <b>First Border</b> YOSH-01 Black 1 yard	9	$3\frac{1}{2}" \times 42"$		
 <b>Outside Border</b> YOSH-03 Black 2 $\frac{1}{3}$ yards	2 2	$82" \times 8\frac{1}{2}"$ $73" \times 8\frac{1}{2}"$ (fussy cut)		

**Binding** -  $\frac{2}{3}$  yard, based on  $2\frac{3}{4}"$  strips

**Backing** -  $4\frac{3}{4}$  yards

**Batting** -  $76" \times 85"$

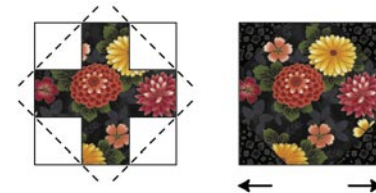
## Assembly Line Method

Use this method when making multiple pieces or blocks.

1. Position pieces right sides together, stitch unit.
2. Align and sew the next unit without breaking threads, continue this process to stitch additional units. Cut sections apart, press and continue with next step.

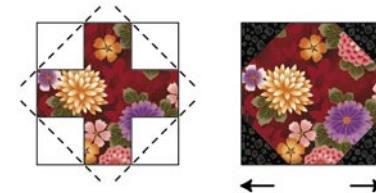
## Making the Garden Blocks

1. Simple Triangle technique is used throughout this project. Draw diagonal lines on the wrong sides of  $3\frac{1}{2}"$  Fabric D squares. This will be your sewing line. Place four marked squares on one  $9\frac{1}{2}"$  Fabric A square as shown. Stitch on drawn line, trim  $\frac{1}{4}"$  away from stitch lines and press. Make five.



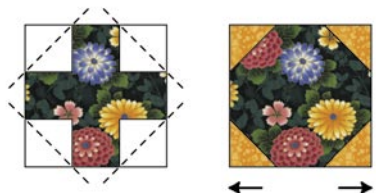
Fabric D =  $3\frac{1}{2}" \times 3\frac{1}{2}"$   
Fabric A =  $9\frac{1}{2}" \times 9\frac{1}{2}"$   
Make 5

2. Making simple triangle units, sew four  $3\frac{1}{2}"$  Fabric D squares to one  $9\frac{1}{2}"$  Fabric B square as shown. Press. Make four.



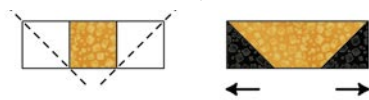
Fabric D =  $3\frac{1}{2}" \times 3\frac{1}{2}"$   
Fabric B =  $9\frac{1}{2}" \times 9\frac{1}{2}"$   
Make 4

3. Making simple triangle units, sew four  $3\frac{1}{2}"$  Fabric E squares to one  $9\frac{1}{2}"$  Fabric C square as shown. Press. Make six.



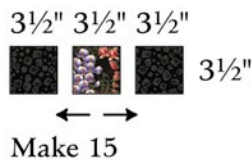
Fabric E =  $3\frac{1}{2}" \times 3\frac{1}{2}"$   
Fabric C =  $9\frac{1}{2}" \times 9\frac{1}{2}"$   
Make 6

**4.** Making simple triangle units, sew two  $3\frac{1}{2}$ " Fabric D squares to one  $3\frac{1}{2}$ " x  $9\frac{1}{2}$ " Fabric E piece as shown. Press. Make thirty.



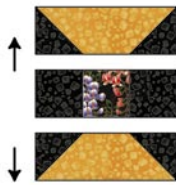
Fabric D =  $3\frac{1}{2}$ " x  $3\frac{1}{2}$ "  
 Fabric E =  $3\frac{1}{2}$ " x  $9\frac{1}{2}$ "  
 Make 30

**5.** Sew  $3\frac{1}{2}$ " Fabric F square between two  $3\frac{1}{2}$ " Fabric D squares as shown. Press. Make fifteen.



Make 15

**6.** Sew one unit from step 5 between 2 units from step 4, rotating pieces as shown. Press. Make fifteen.



Make 15

**7.** Sew one unit from step 1 to one unit from step 6 as shown. Press. Make five.



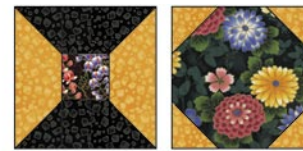
Make 5

**8.** Sew one unit from step 2 to one unit from step 6 as shown. Press. Make four.



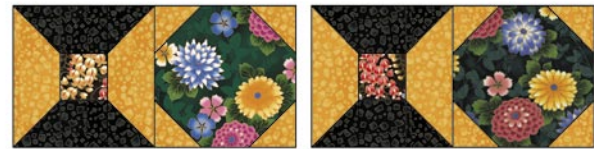
Make 4

**9.** Sew one unit from step 3 to one unit from step 6, rotating piece as shown. Press. Make six.



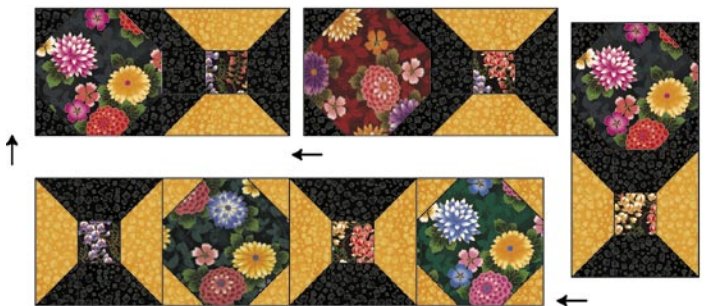
Make 6

**10.** Sew two units from step 9 together as shown. Press. Make three.



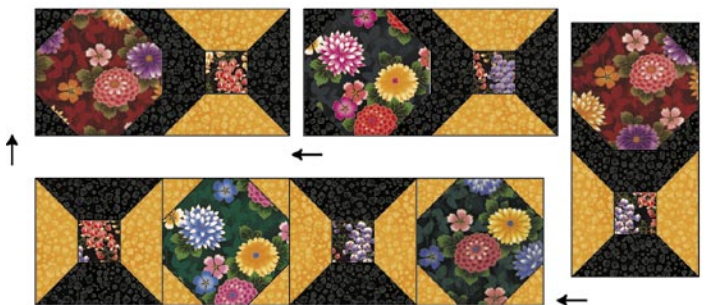
Make 3

**11.** Sew one unit from step 7 to one unit from step 8 as shown. Press. Sew this unit to one unit from step 10. Press. Sew one unit from step 7 to this unit, rotating piece as shown. Press. Make two.



Make 2

**12.** Sew one unit from step 8 to one unit from step 7 as shown. Press. Sew this unit to one unit from step 10. Press. Sew one unit from step 8 to this unit, rotating piece as shown. Press.



**13.** Referring to quilt layout, sew row from step 12 between two rows from step 11. Press.

## Mitered Borders

1. Sew 3½" x 42" First Border strips end-to-end to make one continuous 3½"-wide strip. Press. Cut two 82" and two 73" strip lengths.

2. Sew lengthwise one First Border strip and one Outside Border strip matching lengths. Press. Make two of each measurement.

3. To make a mitered border, measure each side of quilt and mark center with a pin. Fold each border unit crosswise to find its midpoint and mark with a pin. Mark quilt midpoint and ¼" from each corner on all sides. Match quilt and border unit at midpoint, pin length of quilt stopping at ¼" marks. Using a ¼" seam allowance, start and stop stitching at ¼" marks. Press. Repeat for all sides.

4. Fold corner of quilt diagonally, right sides together, matching seams and borders. Place a long ruler along fold line extending across border. Draw a diagonal line across borders, this will be your stitching line. Sew on marked line, start stitching from quilt ¼" mark. Check for squareness, then trim ¼" from seam line to remove excess. Press seams open. Repeat for all sides.

## Finishing the Quilt

1. Cut backing into two equal pieces. Sew pieces together to make one 80" x 85" approximate backing piece. Press.

2. Press backing and quilt top trimming all excess threads. Layer and baste backing, batting and quilt top together. Hand or machine quilt and bind as desired.

## be creative!

Use your Kona Bay fabric stash to create complimentary quilting projects using the Garden Block instructions:

### Accent Pillows~

Add borders to one block for a pillow accent.

### Make it Bed-Sized~

Twin-size: 6 blocks across & 8 blocks down  
= 77" x 95"

Queen: 8 blocks across & 10 blocks down  
= 95" x 113"

King: 9 blocks across & 10 blocks down  
= 104" x 113"

*Yoshiko Collection by Kona Bay Fabrics includes fifteen distinctive cotton patterns in several colorways.*



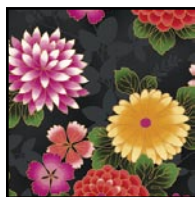
YOSH-01  
Black



YOSH-01  
Navy



YOSH-02  
Green



YOSH-02  
Gray



YOSH-02  
Red



YOSH-03  
Black



YOSH-03  
Fuchsia



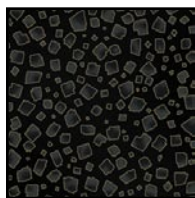
YOSH-04  
Black



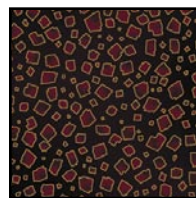
YOSH-04  
Navy



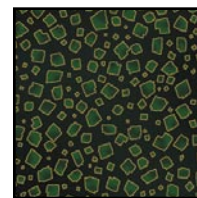
YOSH-04  
Red



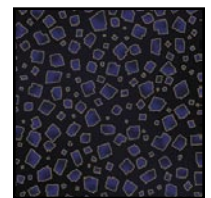
YOSH-05  
Black



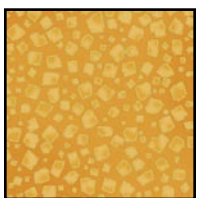
YOSH-05  
Burgundy



YOSH-05  
Hunter



YOSH-05  
Navy



YOSH-05  
Yellow

  
**KONA BAY**  
F A B R I C S

1637 Kahai Street  
Honolulu, HI 96819  
(800) 531-7913  
[www.konabay.com](http://www.konabay.com)